



AllWays

Sloane Place Hotel, England, UK

[www.allwaystraveller.com](http://www.allwaystraveller.com)



## Sloane Place continues in fine tradition

**Sloane Place is a boutique hotel situated just off just off Sloane Square in Chelsea.**

It is a sister property to *The Sloane Club*, which was established by Queen Victoria's daughter in 1922 as the then Service Women's Club and was for the exclusive use of women in the forces.

Sloane Place has 66 bedrooms and a restaurant with menus created by Executive Chef, Bernhard Mayer and Head Chef, Maryono Maryono.

The hotel provides a base for Sloane Square itself and the King's Road, along with the Saatchi Gallery and Royal Court Theatre.

It is also within walking distance for events at the Royal Hospital Chelsea, including the annual Chelsea Flower Show and the Longines Global Championships equestrian tournament.

[www.sloaneplace.com](http://www.sloaneplace.com)

**Ashley Gibbins**  
Commissioning Editor  
**AllWays traveller**





# Exploring Sloane Square and its surrounds

Although I have lived in London for many years, I have only visited Sloane Square and its environs a handful of times and know little of the area.

By Ann Mealor

I usually pass through at a fast trot on my way to the annual Longines Global Championships, the premiere show jumping competition at Chelsea Hospital, with neither time nor inclination to explore.

So, I was delighted when the opportunity came up to spend a night at Sloane Place Hotel and with it the chance to get to know the Belgravia and Chelsea area of central London better.

Sloane Square is formed around a central island with its Venus Fountain, a monument to lovers presented by the Royal Academy of Arts in 1953.

It leads on to the King's Road and was named after Charles II.

It was the king's private road until 1830 and once belonged to Sir Hans Sloane, a physician to three monarchs and inventor of drinking chocolate, which he sold to Cadbury's.

## A stylish London hub

Right on our doorstep was the stylish shopping hub, Duke of York Square with over 30 chic stores, restaurants and al fresco dining.

This historic square is home to one of London's best artisan food markets and the iconic Saatchi Gallery.

I also came across two of my favourite stores - Partridges Sloane Square and Soho Home.

Partridges is one of the few family run food shops in London.

It has an olde country store atmosphere and is packed with an array of fine foods and other tempting produce.

We bought two hot flatbreads off the deli counter and ate them outside under the patio heaters.

My other find was Soho Home, a luxury interiors store.

Whilst browsing, fingers feeling silky fabrics, I felt like a guest in someone's very grand house admiring their good taste and fortune.

Set in an old chapel, a central sweeping staircase, entices visitors to the first floor to perhaps sit a while and linger on one of the elegant chairs, sipping coffee or hot chocolate from the bijou in-store café.

Never before has a furniture shop had me so enthralled.

Just wandering along King's Road is a feast for the eyes.

So many windows filled with dainty pastries, gorgeous gateaux and exquisite chocolates.

The area has a real 'village' vibe.

I have another favourite shop in the area - *Artisan du Chocolat*.



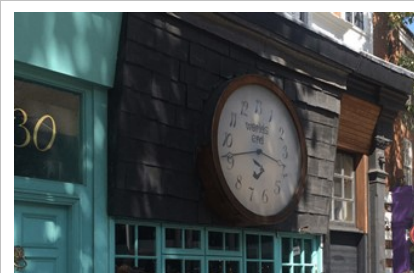
Sloane Square



Soho Home



Saatchi Gallery



King's Road



Duke of York Square



Royal Hospital Chelsea

It sells the best sea salted caramels I have ever tasted – little boules of pure liquid gold.

I bought two boxes and was given a complimentary hot chocolate by the very helpful staff.

Pavilion Road is an 'artisan food and drink street' with a real village feel.

As we were dining at Sloane Place that evening, on our way back to the hotel, we resisted the temptation to pop in to one of the many delightful restaurants and bistros for a snack.

We made the right decision!



Pavilion Road

## More information

[www.dukeofyorksquare.com](http://www.dukeofyorksquare.com)

[www.kingsroad.co.uk](http://www.kingsroad.co.uk)

[www.sohohome.com](http://www.sohohome.com)

[www.partridges.co.uk](http://www.partridges.co.uk)

[www.saatchigallery.com](http://www.saatchigallery.com)

[www.chelsea-pensioners.co.uk/public-events](http://www.chelsea-pensioners.co.uk/public-events)

[www.pavilionroad.co.uk](http://www.pavilionroad.co.uk)

[www.rbkc.gov.uk/explore-kensington-and-chelsea/local-shopping](http://www.rbkc.gov.uk/explore-kensington-and-chelsea/local-shopping)





## A great place for exploring Chelsea and Belgravia

Sloane Place is a boutique hotel and café bar not far from the tube and close to everything you need to see.

Our room, a Chelsea Double, was comfortably and traditionally furnished with all the modern essentials required for a short stay, including plenty of luxurious Molton Brown toiletries.

Before heading on out for the afternoon, we relaxed with tea and biscuits from our hospitality tray and put our feet up for five minutes knowing that we had quite a bit of walking ahead of us!

### Dining at Sloane Place

After all the walking and window shopping, I had built up quite an appetite and was looking forward to trying out the Sloane Place menu.

The restaurant was chic and modern with a convivial atmosphere.

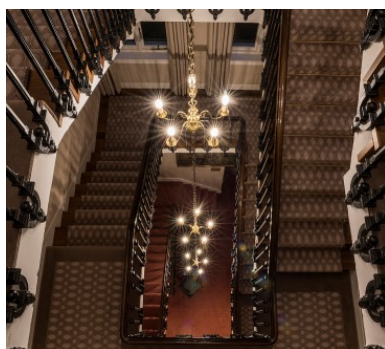
Decorated in blues and greys it is a cross between plush and warehouse, casual and formal, with its padded seats, exposed pipework, subtle lighting, bare marble top tables, linen napkins and silver cutlery.

### Fiery cocktails

I started the evening with a cocktail, always a treat when dining out, and tried the Fiery Rose Margarita.

I love Margarita's and this was a hot yet pleasing twist on the original.

I had two, so no need for wine with the meal!







## The dinner

For my first course, I decided on the yellow fin tuna fillet tataki with truffle dressing and wakami.

It was light, tender and fresh, with a piquant kick.

Ashley went for the dressed Devon crab with decompressed cucumber, a chilli-mayo salsa and crispy tortillas.

It was beautifully presented with a delicious mix of flavours and textures. Both starters were good, but for me, the crab was stand out and probably the best dressed crab I have tasted.

For the main event I chose the Surrey Farmed Angus rib-eyed steak with a piquant peppercorn sauce, and hot and tasty parmesan coated chips.

The steak was juicy and perfectly cooked, with the softened peppercorns, which gave the sauce a pleasing crunch.

Ashley had a delicious soft and flaky pan-seared stone bass fillet with warm pumpkin and chestnut tabbouleh, pomegranate and a honey mustard dressing

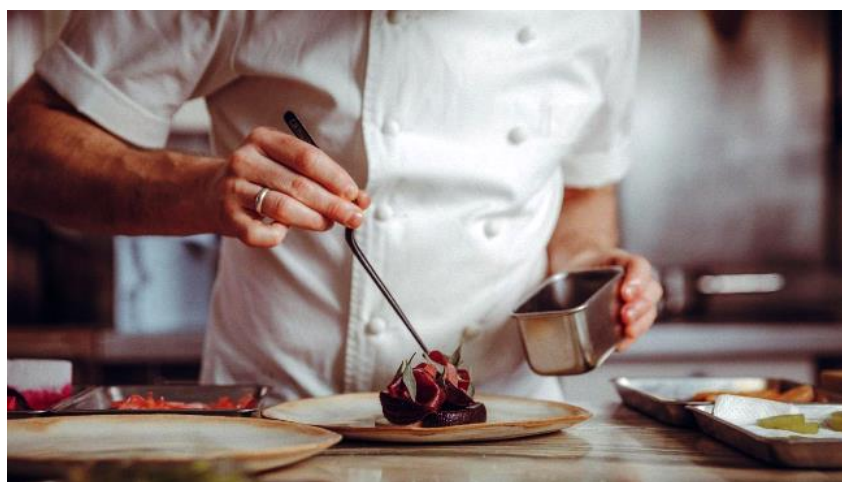
## Breakfast

Although we had eaten well the night before, as usual, we were still looking forward to breakfast.

However, we did on this occasion pick the lighter options of smoked salmon and scrambled eggs and poached eggs on sourdough, with tomatoes, bacon and feta cheese.

Sloane Place is the ideal place to stay for exploring Chelsea and its quaint surroundings.

Expansion plans, including a lounge area for guests, are in the pipeline, so I am looking forward to a return visit!



## More information

[www.sloaneplace.com](http://www.sloaneplace.com)



## A snapshot of Sloane Place



## AllWays traveller and the International Travel Writers Alliance



**AllWays traveller** is the consumer travel magazine from the International Travel Writers, providing independent travellers with views of the world from Alliance travel journalists.

[www.allwaystraveller.com](http://www.allwaystraveller.com)



**The International Travel Writers Alliance** is the world's largest association of professional travel journalists.

[www.itwalliance.com](http://www.itwalliance.com)



**Ann Meador** is a professional travel writer and photographer and Managing Editor of *AllWays Traveller*.



**Ashley Gibbins** is a professional travel writer and photographer and Managing Director of the International Travel Writers Alliance.